

Regional workshop on strengthening the collection and the use of international migration data ...

Use of Surveys for Migration Statistics

PRAJEEWA HETTIYANI
STATISTICIAN
DEPARTMENT OF CENSUS AND STATISTICS
SRI LANKA.

OUTLINE

- BACKGROUND
- USE OF SURVEYS FOR MIGRATION STATISTICS
- COLLECTING MIGRATION DATA
- PASSENGER SURVEYS
- SUCCESS AND CHALLENGES
- OTHER SURVEYS

BACKGROUND

- We are interested in migration statistics
- Because migration add considerable percentage to our Gross Domestic Product (GDP)
- It contribute our labour force

Foreign Remittances in 2017

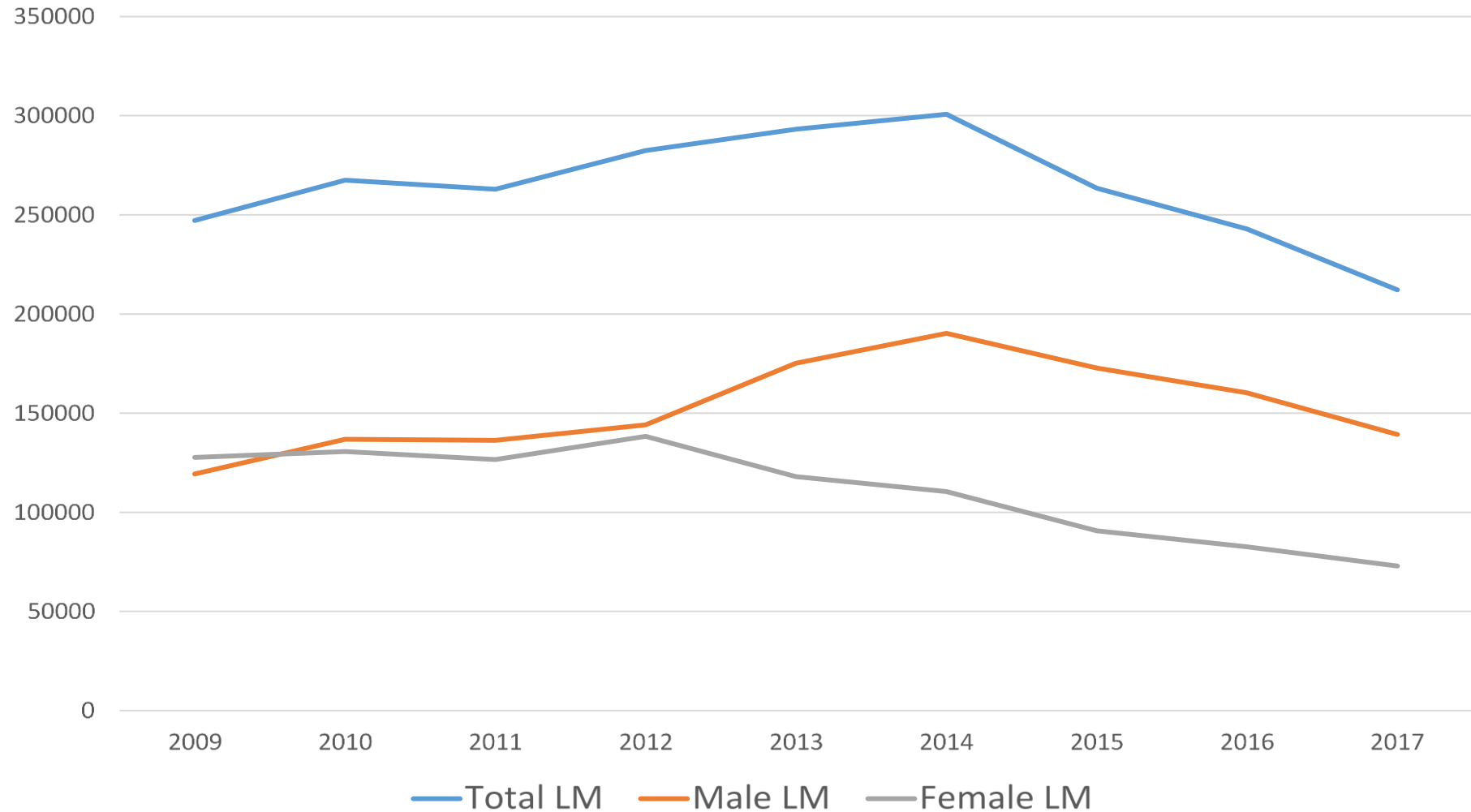
| Income | Year - 2017 (Mn) | % |
|--------------------|------------------|-----|
| Foreign Employment | USD 7164 | 8.2 |
| Tourism | USD 3928 | 4.5 |
| GDP | USD 87247 | |

Number of Labour Migrants by Gender 2009-2017

| | 2009 | 2010 | 2011 | 2012 | 2013 | 2014 | 2015 | 2016 | 2017 |
|-----------|--------|--------|--------|--------|--------|--------|--------|--------|--------|
| Total LM | 247126 | 267507 | 262961 | 282447 | 293218 | 300703 | 263443 | 242930 | 212162 |
| Male LM | 119381 | 136850 | 136307 | 144135 | 175185 | 190217 | 172788 | 160302 | 139271 |
| Female LM | 127745 | 130657 | 126654 | 138312 | 118033 | 110486 | 90655 | 82628 | 72891 |

Total Labour Migrants increase until 2014 then decline
But female Labour Migrants decline from 2012, Why ?

Total Number of Labour Migrants by Gender 2009-2017

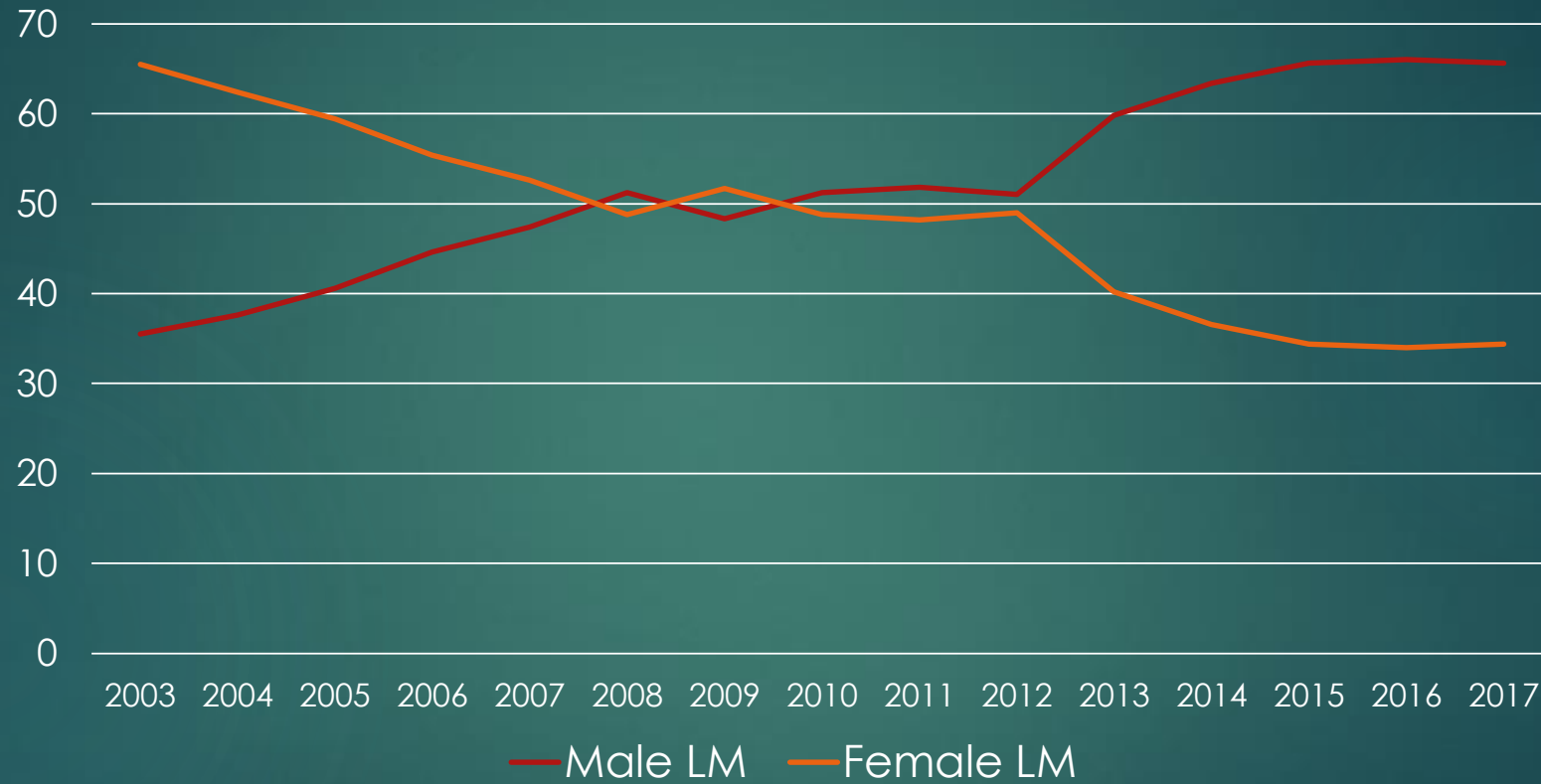


Percentage of Labour Migration by Gender 2003-2017

| | 2003 | 2004 | 2005 | 2006 | 2007 | 2008 | 2009 | 2010 | 2011 | 2012 | 2013 | 2014 | 2015 | 2016 | 2017 |
|-----------|------|------|------|------|------|------|------|------|------|------|------|------|------|------|------|
| Male LM | 35.5 | 37.6 | 40.6 | 44.6 | 47.4 | 51.2 | 48.3 | 51.2 | 51.8 | 51.0 | 59.8 | 63.4 | 65.6 | 66.0 | 65.6 |
| Female LM | 65.5 | 62.4 | 59.4 | 55.4 | 52.6 | 48.8 | 51.7 | 48.8 | 48.2 | 49.0 | 40.2 | 36.6 | 34.4 | 34.0 | 34.4 |

Percentage of male migrants was 35.5 and female was 65.5 in 2003
But in 2017 it was totally change (male 65.6)

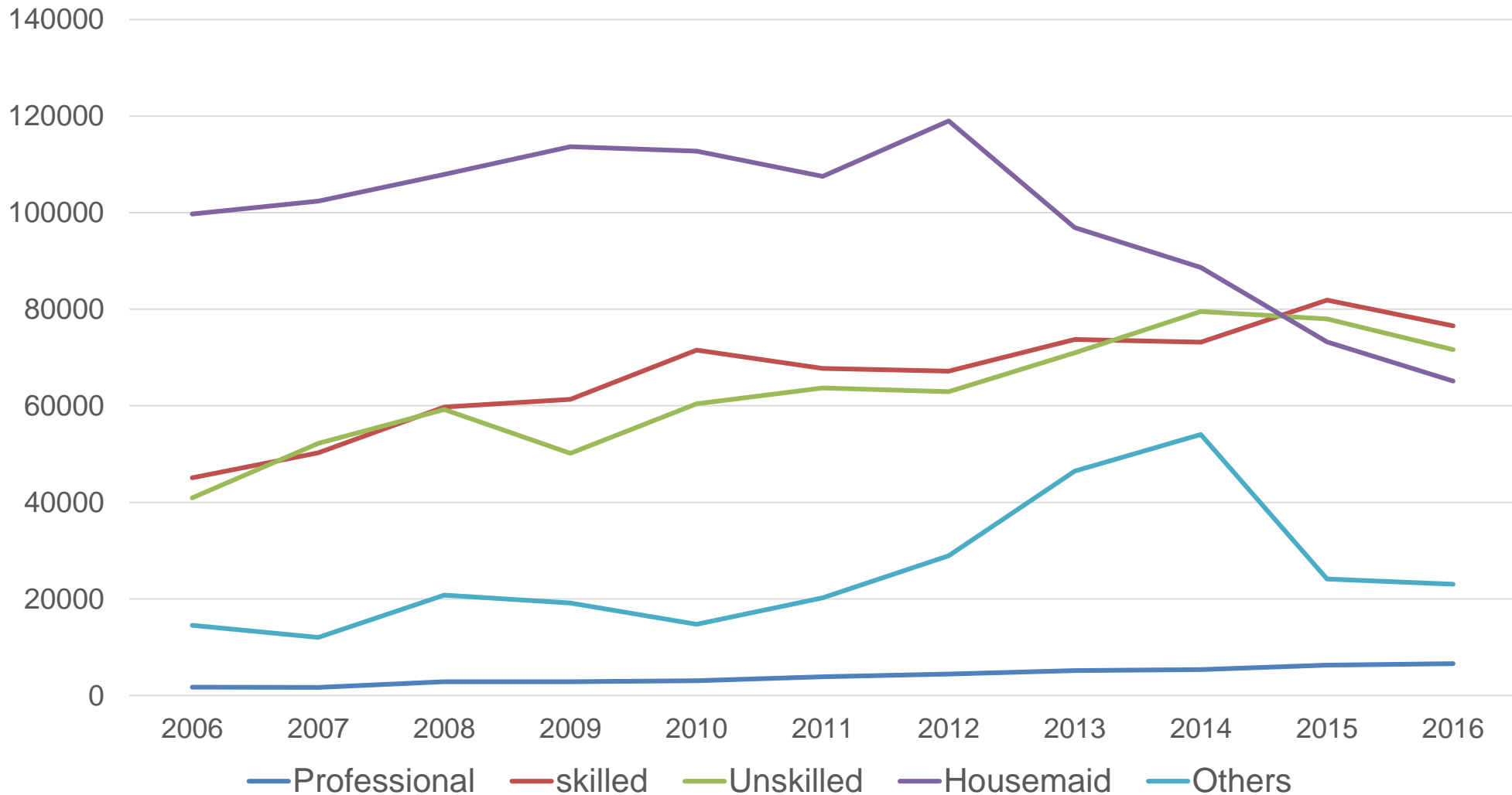
Percentage of Labour Migration by Gender 2003-2017



Number of Labour Migrants by Manpower Level

| | Professional | skilled | Unskilled | Housemaid | Others |
|------|--------------|---------|-----------|-----------|--------|
| 2006 | 1713 | 45063 | 40912 | 99711 | 14549 |
| 2007 | 1653 | 50263 | 52176 | 102355 | 12012 |
| 2008 | 2835 | 59718 | 59239 | 107923 | 20784 |
| 2009 | 2832 | 61321 | 50173 | 113678 | 19122 |
| 2010 | 3057 | 71537 | 60422 | 112752 | 14739 |
| 2011 | 3844 | 67726 | 63680 | 107491 | 20220 |
| 2012 | 4448 | 67150 | 62907 | 119011 | 28931 |
| 2013 | 5151 | 73707 | 70977 | 96900 | 46483 |
| 2014 | 5372 | 73162 | 79519 | 88628 | 54022 |
| 2015 | 6251 | 81862 | 77985 | 73226 | 24119 |
| 2016 | 6574 | 76559 | 71641 | 65127 | 23029 |

Number of Labour Migrants by Manpower Level



Use of surveys for Migration Statistics

- Should cover all the areas by population census questionnaire
- so we can't add much more questions to it
- A sample survey will help to collect migration statistics
- Using specialized survey we can cover more and more about migrants,
- Their family background, socio-economics backgrounds
- Can add a module to household survey as well (LFS or HIES)

Collecting Migration Data

There are three (03) ways of collecting migration data.

- ❖ **Census of Population and Housing (15th census – 2021)**

- ❖ **From Sample Survey**
 - House hold income and expenditure survey, (every 3 years).*

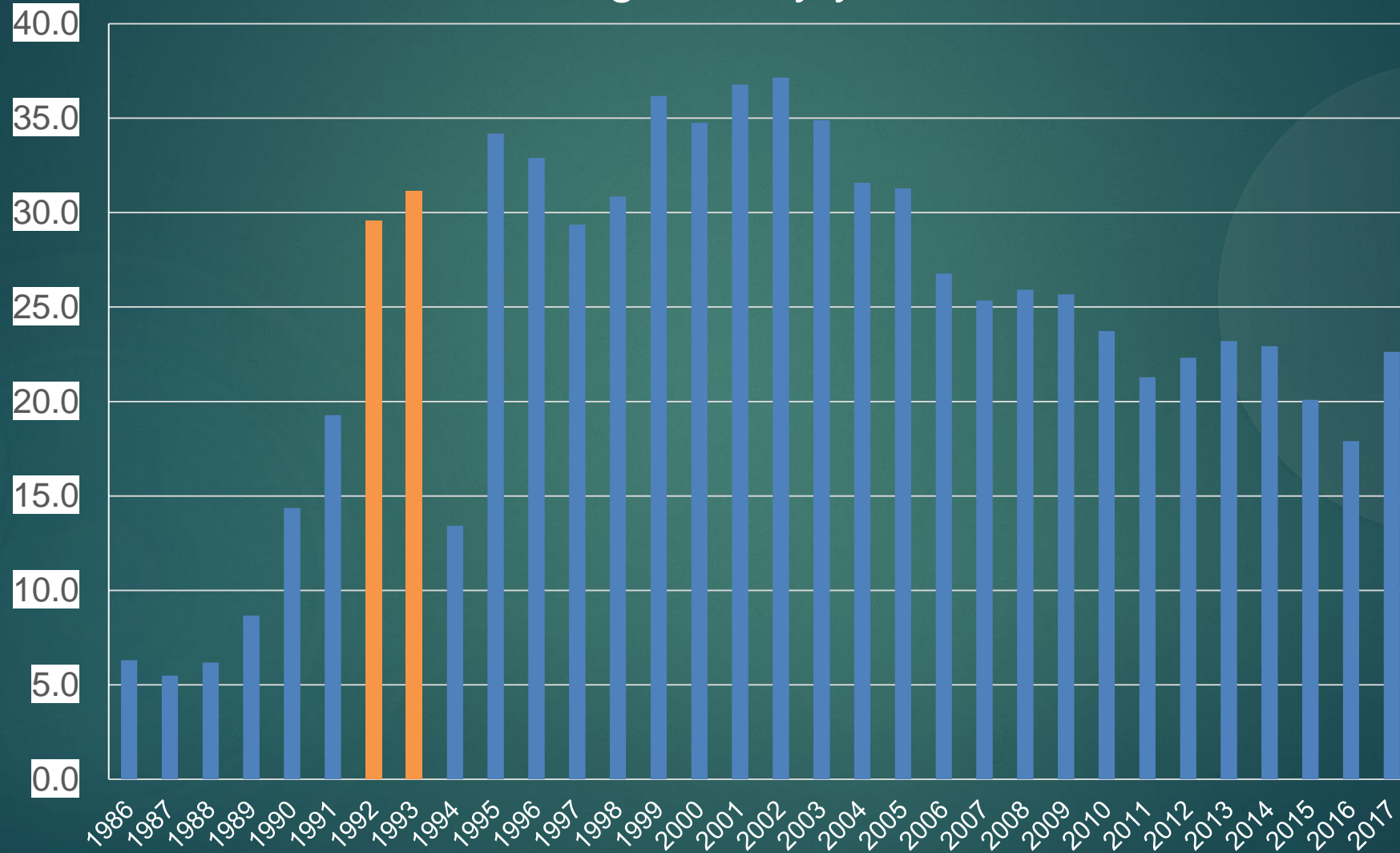
- ❖ **Administrative data ;**
 - 1) *Department of Immigration and Emigration*
 - 2) *Sri Lanka Bureau of Foreign Employment*
 - 3) *Sri Lanka Tourism Authority*

Passenger Surveys in Sri Lanka

- Enumerate, out migrants for employments.
- Based on Bandaranaike air port.
- This survey was carried out by Sri Lanka Bureau of Foreign Employment.(SLBFE)
- Data is available in SLBFE website.
- Our first and ever passenger survey was in 1992/93
- This is a longstanding Survey.

| Year | Departure for Employments | Total Departure |
|------|------------------------------|-----------------|
| 1986 | 14,456 | 229,386 |
| 1987 | 14,127 | 257,760 |
| 1988 | 18,428 | 298,583 |
| 1989 | 24,724 | 285,549 |
| 1990 | 42,625 | 296,884 |
| 1991 | 64,983 | 337,203 |
| 1992 | 124,494 | 420,749 |
| 1993 | 129,076 | 414,363 |
| 1994 | 60,168 | 448,437 |
| 1995 | 172,489 | 504,420 |
| 1996 | 162,576 | 494,258 |
| 1997 | 150,283 | 511,827 |
| 1998 | 159,816 | 518,050 |
| 1999 | 179,735 | 496,964 |
| 2000 | 182,188 | 524,212 |
| 2001 | 184,007 | 500,218 |
| 2002 | 203,773 | 548,440 |

Percentage of Migrants Workers from total Migrants by year



Success / Challenges

- Increase the number of registered departure migrants as introduce new policy in 1995 for migrating for employments.
- Base on survey results SLBFE and the Line Ministry introduce number of policy decisions on migration
- It is mandatory for all Sri Lankan to register in SLBFE from 1995
- SLBFE continued various programmers to regulate the labour migration process while empowering migrant workers and their families.
(eg. free insurance scheme)

Success / Challenges Cont.....

- Implement number of Reintegration program based on this survey (social, economic , ...)
 - Identify various obstacles faced by migrants
 - Had basic ideas of recruitment cost migrate and other socio economic background of migrants
- (We can update this experience with upcoming survey on migrants cost)

Challenges

- It was very hard job get an answer from them in the airport . That was an emotional moment for the first time migrants
- Some of them came with their relatives to the airport
- Some of them came at the last moment
- Lack of Time (we have only 1-2 hours)
- Difficult task to verify the correct reason for migrating
- Some of them use other visa categories to migrate
- This is still a problem (Should Introduce a policy)

Other Surveys

| Survey | Time period | Sample Size |
|---|------------------------------------|-------------------|
| Sri Lanka Labour Force Survey | Annually | 25000 (Household) |
| Household Income and Expenditure Survey | Once in three years | 25000 |
| VAW (Valance against women) | March to June | 2520 |
| ICLS (pilot Study) | March to August | 3920 |
| STEP survey | May to July (in three rounds) | 7728 |
| Recruitment cost survey | In fourth quarter (planning stage) | |

Other Surveys Cont.....

- We planned to conduct a special survey to calculate migrating cost born by migrants (SDG 10.7.1)

Collaborating with ILO and SLBFE

Will finalized by the end of this month whether it is survey or add a module to LFS

Q & A



THANK YOU